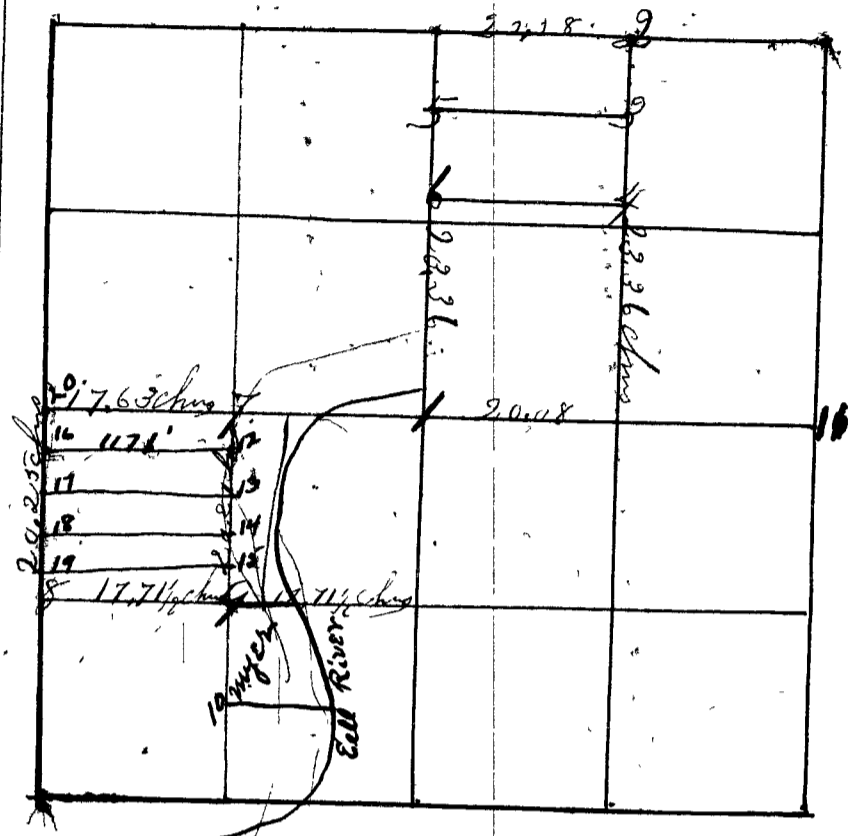


Surveyed by Homer Hicks Oct. 29th, 1875 Chaimmen  
 William Boothe and Survey made by  
 request of parties interested by Henry Schultz, William  
 Murbarger, Philip Rader and James T. Carruthers. All present



Cor. No. 1 Reser by R. J. J. J.  
 Corner No. 1. Set by J. W. Davis (not recorded) perpetuated  
 by request of Henry Schultz and James T. Carruthers  
 Wit. An Elm 12. N 22 1/2 W 16 links An Elm 18. S 85 W 12.  
 Corner No. 2 Set by John W. Davis (not recorded) perpetuated  
 by request of Philip Rader and Henry Schultz  
 Wit. a Hawth 10. N 87 1/2 W 3.53 chns Cottonwood 10. S 2 W. 2.40  
 Corner 3 7.62 1/2 chns South of cor. No. 2 Sand Stone 23 ins long  
 " " " " fr. wh. a Coffee nut 4 S 1 W 37 links  
 " No. 4 9.55 " " of cor No. 3 Sand Stone 18 ins long  
 " " " " fr. wh. a Hackberry 18 North 2.39 chns.  
 " " 5.76 2 1/2 " " of N.W. cor. of gr. Sand Stone 18 ins long  
 " " 6. 9.55 " " of cor. No. 5. Sand Stone 18 ins long  
 fr. wh. a B. Walnut 30 S 89 1/2 W 7 links  
 Homer Hicks. S.C.C.

Further surveyed by Homer Hicks Surveyor Clay County  
 Nov. 13, 1875 Wm Moon and Miller Chaimmen  
 Corner No. 7. Sand Stone set by J. W. Davis agreed to by  
 parties interested Wit. A. B. Walnut 18. S 8 1/2 W 38 1/2 links.  
 Cor. No. 8 Set J. W. Davis Agreed to by those interested & left  
 remaining Sand Stone from wh. an Elm 30 S 87 E. 37 links Locust 16. N 44 1/2 W 10.  
 Corner No. 9. Sand Stone fr. wh. a Sycamore 18. S 15 1/2 E 135 1/2 links  
 Cottonwood 24. S 5 W 20.8 links and  
 a Maple 30. N 12 E 12 links.  
 Homer Hicks S.C.C.