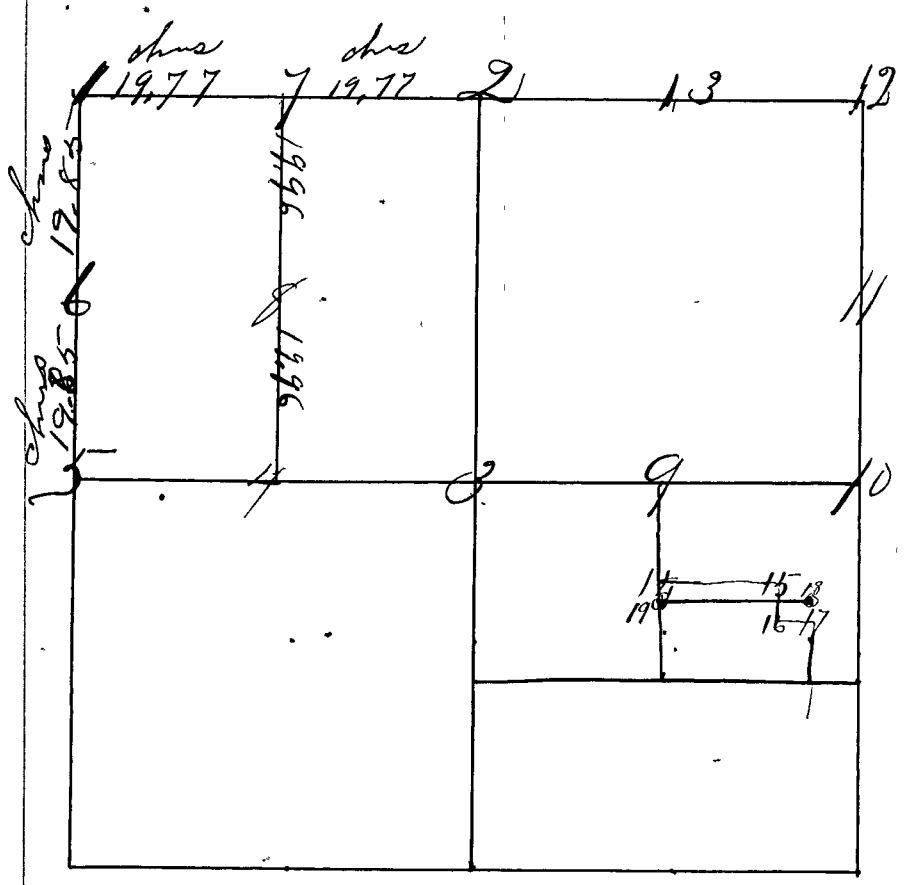


Surveyed by Homer Hicks Surveyor Clay County Ind. October 1874. Chainmen & Flagmen Sworn,

(See Page 615 This Record) "M. Reintson"

See Record No 2 Page 78



- Corner no. 1. Sand Stone N. S. 8, 9, 10 & 17 from which.
- " " " " " " A Sand Stone South 25 links
- " " " " " " North 38 "
- " " 2 Sand Stone N. 1/4 S. from which
- " " " " " " A Sand Stone South 25 1/2 links
- " " " " " " do do North 25 "
- " " 3 Sand Stone from which
- " " " " " " @ White Oak. 40. N. 40 1/2 W. 44 links
- " " " " " " @ Niggerhead South 20 "
- " " 4 Sand Stone fr. wh. Sand Stone South 25 links
- " " " " " " do do North 17 "
- " " 5 Sand Stone " " An Elm 18. East 63 "
- " " " " " " Sand Stone West 28 "
- " " 6 Sand Stone N. 1/16 S. fr. wh. a Beech 20. N 74 W. 22 1/2 "
- " " " " " " a Stone N. 83 E. 31 links
- " " 7 Sand Stone N. 1/16 S. fr. wh. S. S. 17 E. 32 do
- " " " " " " do. N 73 W. 85 1/2 "
- " " 8 Sand Stone not marked. fr. wh
- " " " " " " Stone north 14 links &
- " " " " " " Stone West 24 "
- " " 9 " " fr. wh Stone S 83 W. 15 links &
- " " " " " " N. 85 E. 16 1/2 "