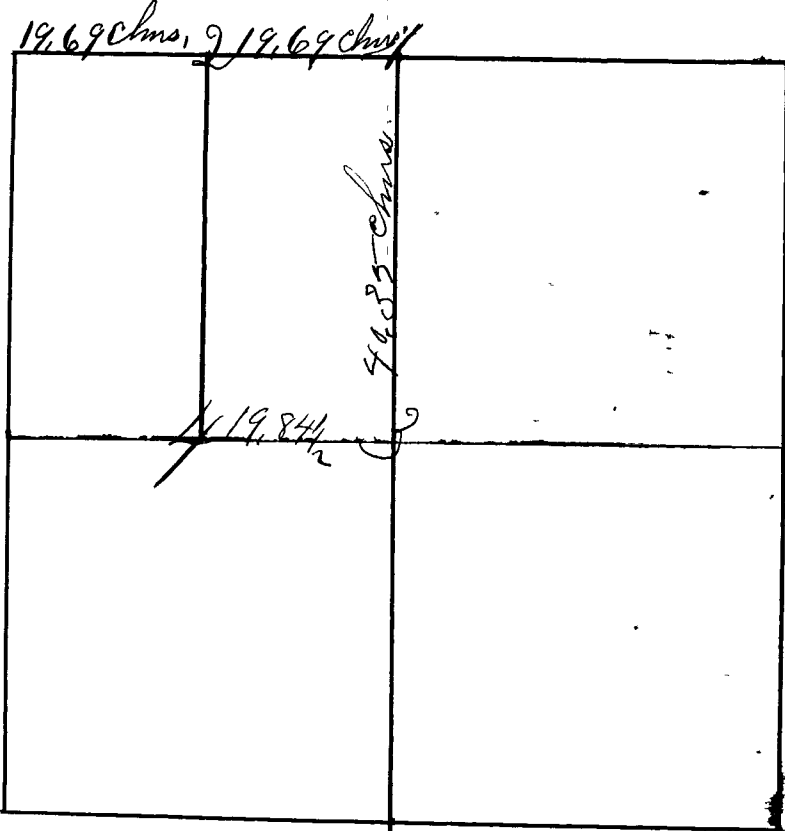


Surveyed by Homer Hicks, Surveyor Clay County Ind.  
 October 20, & 21, 1873. Chainmen, Flaymen and Axman  
 sworn as Law directs,



Notice of Survey.  
 Notice is hereby given to A. P. Osborn and Milton Osborn, that the undersigned will have his land, viz:  
 The east half of the northwest quarter of sec. 1, town 10, north of range 7, west, Clay county, Indiana, surveyed, lines and corners established and perpetuated by the County Surveyor or his deputy, commencing at the northwest corner of said sec., on the 17th day of October, 1873, at 10 o'clock A. M.  
 AMBROSE BAKER.

Survey postponed until Oct. 20, 73  
 on account of rain.

- Corner no 1 Sand Stone marked 1/4 S. Set from original Witness
  - " " " " " A Bur Oak 14. N. 25 1/2 W. 88 links.
  - " " " " " An Ash 8. N. 54 E. 42 "
  - " " 2 " " " Marked 1/8 S. 19.69 Chms. W. of Cor No. 1
  - " " " " " A Hickory 15. S. 4 1/2 W. 28 links.
  - " " " " " A Do. 10. N 3 W. 17 "
  - " " 3 " " " Marked 1/4 S. Center section 40.35 chms. S. of No. 1
  - " " " " " A Bur Oak 12. S. 61 W. 47 1/2 links.
  - " " " " " A White Oak 24. N. 73 W. 49. "
  - " " 4 " " " Marked 1/8 S. 19.84 1/2 Chms. West of Cor. No. 3.
  - " " " " " A Bur Oak 12. N 4 1/2 W. 12 1/2 links
  - " " " " " A Hickory 11. S. 8 E. 40 1/2 "
- Homer Hicks S. C. C.