

NORTH RANGE *Sheet 16* WEST

- Reor No. 11 Sand Stone 1/8 S
- " " " " W. Oak 40 S 68 N. 51 " "
- " " " " do, do, 4 N 43 W 39 " "
- " " 12 Sand Stone 1/8 S. " "
- " " " " Hickory 14 S 59 N. 27 " "
- " " " " W Oak 40 N 45 W 47 " "
- " " 13 Sand Stone 1/8 S. - W. Oak 30 S 48 E 35 " "
- " " " " Hickory 16 S 45 E 26 " "
- " " 14 Sand Stone 1/8 S. " "
- " " " " W. Oak 30 S 29 E 49 " "
- " " " " Poplar 36 S 30 W 31 " "
- " " 15 S Stone d. 3, 4, 9-10.
- " " " " W. Oak 40 N 84 W 16 1/2 " "
- " " " " do, do, 40 S 81 E 73 " "

James S. Gray & Geo. Birtz. ch-carriers
John H. Davis, S. L. L.

FORM I C-614 State Form 4288

10M 8-81

INDIANA DEPARTMENT OF HIGHWAYS
CONSTRUCTION RECORD

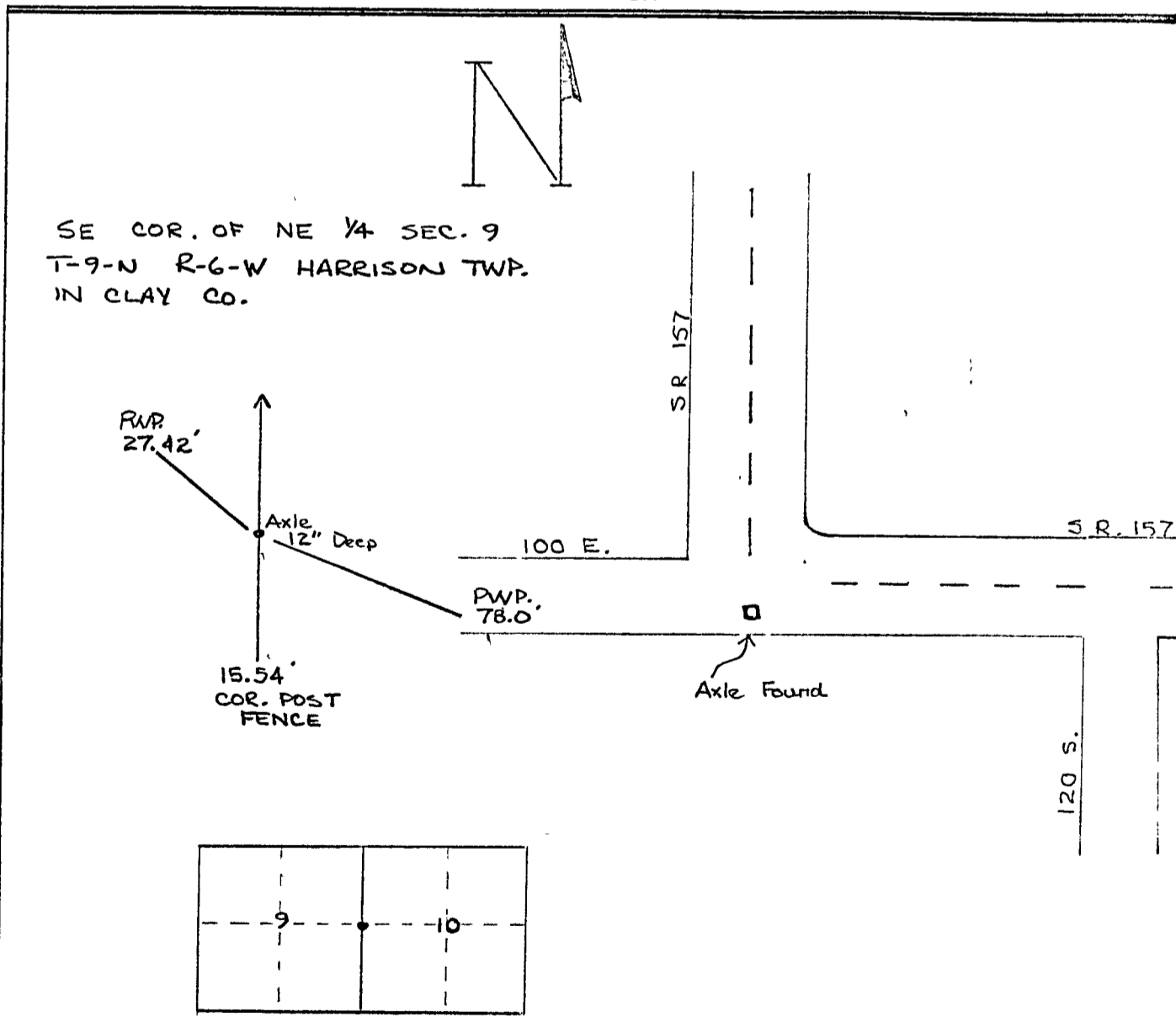
PAGE No. _____

PROJ. NO. _____ SECTION _____ STR. NO. _____

CONTRACT No. _____

DETAIL SKETCH

ITEM No. _____



SUMMARY

ITEM	QUANTITY	PAGE