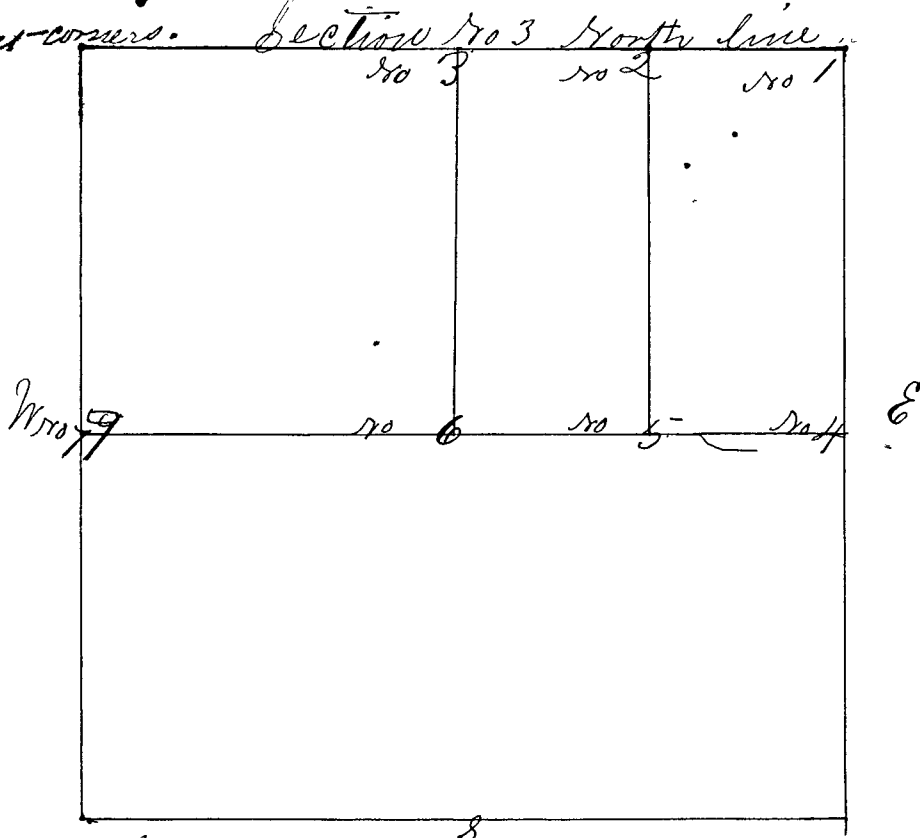


Survey commenced January 31st 1850 agreeable to notice published in the "Terre Haute Journal" three weeks in succession, com. Vol. 2, No 16, Jan. 4th 1850 dated Dec. 26th 1849 Surveyed by W. Herrow C.S. The variation of wind trees taken at 5 degrees west as most courses. and lines.



- Corner No 1 a Stone North East corner of Section (original trees dead)
 - " " " White Oak - N 85 E 20 Links
 - " " " Hickory 10 S 16 W 35 Links
- Corner No 2 a Stone East 1/4 mile N line
 - " " " White Oak 24 in N 57 W 55 1/2 L
 - " " " Hickory 13 S 37 E 8 1/2 Links
- Corner No 3 a Stone 1/2 mile North line
 - " " " Hickory 12 N 52 E 43 1/2 Links
 - " " " corner stone of South 1/2 mile line of Section 34
 - " " " T 12 R 7 W West with line 131 L.
- Corner No 4 a Stone at original trees E 1/2 m.
- Corner No 5 a Stone cent - E & W line E 1/4 mile
 - " " " White Oak 18 N 8 1/2 W 65 Links
 - " " " Hickory 18 S 50 E 47 Links
- Corner No 6 a Stone center of Section
 - " " " White Oak 18 N 16 1/2 E 110 1/2 Links
 - " " " White Oak 36 S 74 W 56 1/2 Links
- Corner No 7 a Stone West 1/2 mile N line
 - Jack Oak 8 East with center line ^{P. 14} 34 L
 - Stone E 1/4 mile center line section
 - No 4 west with said ^{line} 79 Poles